



Belle Meade

Miami Township

Loveland, Ohio

MAY 11-27



Presented Annually

By

The Clermont Home Builders Association

Co-Sponsored By

CitFed Mortgage Company

The Provident Bank

Clermont Savings Bank

West Shell Realtors

Jeff Wyler Dealer Group

Press Community Newspapers



Plans Book Index

Table of Contents

A Message From the President	2
Message From the Promotion Chairman	2
Acknowledgments	3
J.T.M.	4
7-UP and RC Cola	5
Grippe's	7
Grote Bakery	8
Kroger	9
Press Community	10
Barrington Homes	11
Kibler Home Center	11
Al Fangman, Inc.	11
Shamrock Landscape, Inc.	11
Bigg's	12
Porter Paints	13
Stone Center	13
The Sherwin-Williams Company	13
Norandex Inc.	13
Erlanger Lumber	13
The Cincinnati Builders Supply Co.	13
Contracting Enterprises, Inc.	14
The Cincinnati Builders Supply Co.	14
Clermont Lumber Co.	14
Tate Builders Supply Co., Inc.	14
Swallen's	14
John Hueber Homes	16
Henry Fischer Builder	18
Ameritrust	20
Bramble Homes, Inc.	22
Tormohlen Homes	24
Hollandia Interiors	24
Nisbet Lumber & Hardware	26
C. G. Hartman & Assoc., Inc.	26
Hotel Trucking	26
Cincinnati Door Sales	26
CG&E	27
Sardinia Concrete Corp.	28

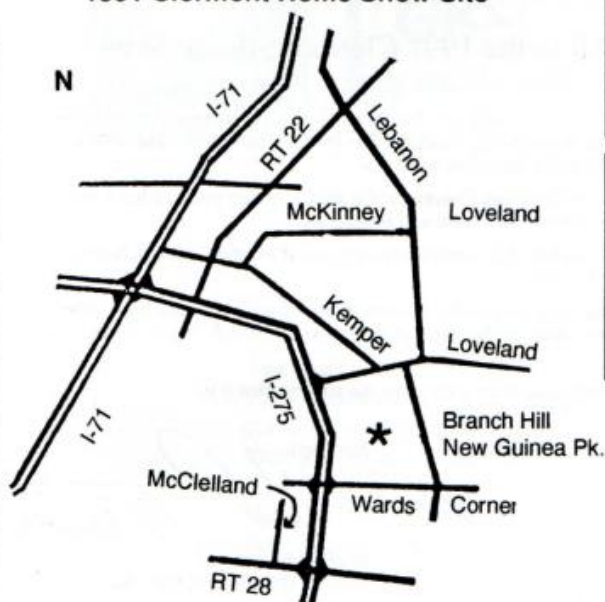
Table of Contents (continued)

Sauls Construction	28
Andres Lumber & Supply	29
Kroger	29
Auxier Gas	30
J.L.G. Company, Inc.	31
Williamsburg Properties	31
NuTone	31
Frazier Williams	32
Clermont Chamber of Commerce	32
Coldwell Banker	33
Fifth Third Bank	34
Jeff Wyler	35
Richard Martin and Son, Inc.	36
Becker's	36
C & M Decks	36
Rapid Plumbing, Inc.	36
West Shell Realtors	37
Lucke Homes, Inc.	38
Bank One	39
Plainville Concrete Co.	39
Airtron Heating and Air Conditioning	39
Lighting Center	40
Decorating Den	40
Clermont Home Builders Association	Front Cover
CitFed Mortgage Corporation of America	Inside Front
Provident Bank	Back Cover
Clermont Savings Bank	Inside Back

Builders

The Drees Company	15
John Hueber Homes	17
Henry Fischer Builder	19
Vicar Homes, Inc.	21
Bramble Homes, Inc.	23
Tormohlen Homes	25

1991 Clermont Home Show Site



Show Dates

May 11 thru May 27, 1991
V.I.P. Preview, May 10, 1991

Show Times

Monday-Friday 5:00 pm - 10:00 pm
Saturday-Sunday 1:00 pm - 10:00 pm
Monday, May 27 - 1:00 pm - 10:00 pm



JOHN K. HUEBER, JR.
President

BRIAN P. MURPHY
Vice President

RICHARD F. KOENIG
Treasurer

JENNIFER A. MOENCK
Recording Secretary

CHARLES BULLINGTON
*Chairman Of
Executive Committee*

DIANE L. HENDRIXSON
Executive Director

Board Of Directors

Mark L. Hensler
Mike Maynard
Daniel S. McAllister
Peter McGarey
Gary L. Pyles

Past Presidents:

George Pritchard
Walter Tormohlen

Welcome to the 1991 Clermont Home Show!

Still the fastest growing county in the state, Clermont County offers us the best of both worlds: rolling countryside, clean air and water, and the convenience and attractions of downtown Cincinnati. What better setting for one of the most important investments of a lifetime!

Tour our outstanding homes and enjoy the talents of the area's finest craftsmen brought together by the builders of these six innovative home designs. Whether you are here to buy a new home or simply remodeling or window shopping, you are certain to discover an abundance of new ideas for living well.

While you are at the show, take a moment to enjoy the sights and sounds of "a beautiful meadow"; Belle Meade. Watch the birds sailing over the pond, and tour the swim club facilities and the neighborhood. You will find it hard to believe you are only minutes from shopping, offices, and schools.

Major support for the Clermont County Home Show has been provided by CitFed Mortgage Co., Provident Bank, Clermont Savings Bank, and West Shell, Inc. We applaud these forward thinking corporations who believe, like us, in the value of our homes and community.

Special thanks goes to Jeff Wyler Dealer Group and Press Community Newspapers.

And now, I proudly present the homes and the home builders, of the 1991 Clermont Home Show.

Sincerely,

John K. Hueber, Jr.
President

Welcome All to the 1991 Clermont Home Show!

First, I would like to say thank you for attending this years show. I would also like to thank all of the participating builders. The builders have really put forth a great deal of effort to make this show what it is.

Being a resident of Clermont County for the past fourteen years, it has been exciting to watch our community grow and prosper.

Where else can you have the convenience of central location, great schools, and a beautiful park like setting?

I guess our community isn't really a secret anymore, we have been one of the fastest growing communities in the state for several years. It truly is a nice place to call home!

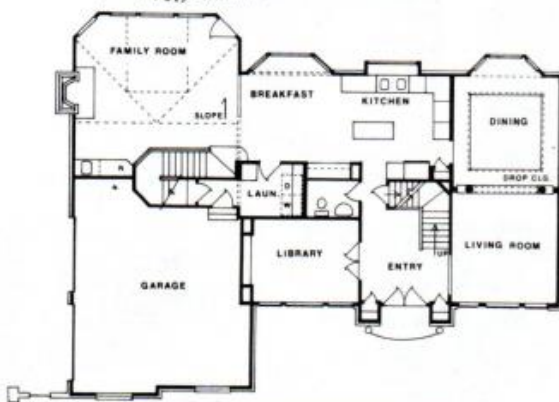
Thanks to all for making this years show the success that it is.

Sincerely,

Michael Martin
Custom Distributors, GE - KA



The Arlington



Rich detailing and the interest-adding look to stucco accentuate the traditional exterior of The Arlington. Living areas abound in this entertainment minded home. The formal entry opens into a private library and the formal living room. The library is warmly appointed with library paneling and book shelves. The formal dining room with coffered ceiling opens onto the back patio area through a beautiful bay window.

The Drees exclusive "Komplete Kitchen" offers a work island, large box window over a triple bowl sink, a large planning desk, 42" cabinets and a pantry. Enjoy casual or family dining in the breakfast bay.

A huge family room features expansive window treatments, a two-story vaulted ceiling, cozy fireplace and a

family staircase to the second level and overlooking balcony. A powder room and laundry are additional first floor conveniences.

The second level is dominated by the fantastic master suite featuring another Drees exclusive, "The Ultra Bath". "The Ultra Bath" offers a spa-like adult retreat from the cares of the day with oversized whirlpool tub, double vanity, walk-in closet and glassed-in shower. You will find more romance in the master suites' private sitting room with fireplace. Two additional bedrooms plus a huge second level bonus room and full bath make "The Arlington" a home with limitless possibilities.

The Drees Company
 211 Grandview Drive • Ft. Mitchell, Kentucky 41017 • (606) 341-0355



The Rosemont



John Hueber Homes - An Eloquent Expression of the Best

John Hueber Homes has defined the home of the 90's by bringing this exquisite two story transitional to life. The Rosemont offers spaces which are both impressive and functional, providing room for family activities and entertainment, while emphasizing the importance of private retreats. John Hueber Homes trademark of craftsmanship in detailed interior woodwork and attention to open spaces is evident throughout this graceful 3000+ square foot design.

Upon entering, you are welcomed to a grand two story foyer reflecting the volume and natural light characteristic throughout this home. A custom study offers a retreat for quiet moments. The formal dining room will grace the finest of dining occasions. At the heart of this home is the Grand Living Room in its true definition; here daily family activity, relaxing and entertaining is enhanced to the fullest. Convenient steps bring you to the lavish gourmet kitchen with authentic custom cabinetry, and state of the art

appliances guaranteed to satisfy the most culinary of tastes. A breakfast area offers picturesque windows to welcome the morning sun. French doors open to a cozy screened porch, offering a bonus area to relax or host guests on a mild day. The Master Quarters, also located on this level, provides a private retreat from the rest of the house. This suite is complemented with gracious luxuries such as an oversized walk-in closet, ample dressing area, whirlpool, shower and bedroom all enlivened by artful window placement.

The upper level of this home is enhanced with three additional bedrooms, all with generous closets. A full bath and dressing unit complete this second level layout.

Finally, a three car garage allows options for several vehicles or "adult toys".

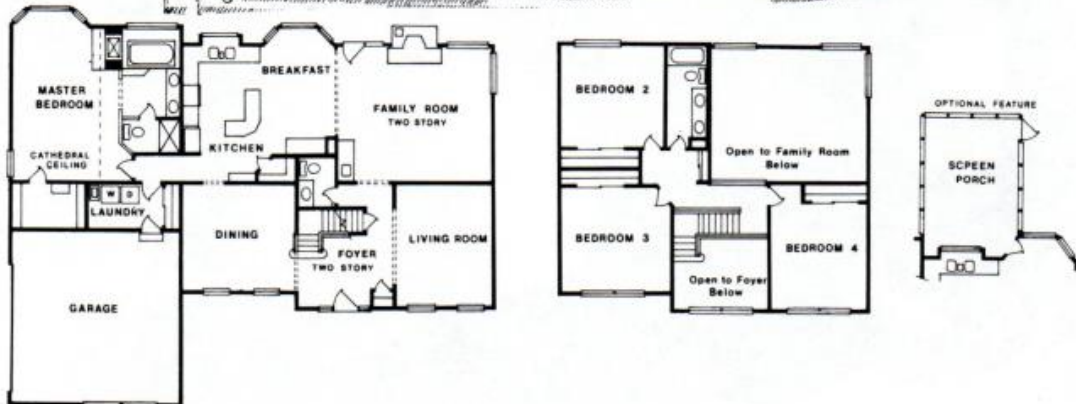
Exquisite exterior design and lavish interior spaces provide elegant living in The Rosemont by John Hueber Homes.

John Hueber Homes

394 Wards Corner Road, Suite 100 • Loveland, Ohio 45140 • (513) 831-7276



The Monroe



One of Henry Fischer Builder's exclusive Lifestyle Design Staff's latest creations. The details are stunning. Two story entry foyer with turned stairs and double bullnosed starter treads. Two story family room with double corner windows for today's open, airy feeling. A deluxe kitchen with bay window in the breakfast nook, planning desk, garden window, custom "L" shaped food preparation island, extra storage cabinets, pantry and butlers' pantry are included.

The first floor master suite/parents' retreat is fit for royalty. Appointments include a cathedral ceiling, sitting

area, plant ledges, bay window, oversized raised whirlpool and fireplace.

The second floor has a balcony with open wood railings overlooking the entry foyer and family room and an additional three bedrooms plus large hall bath with double vanity.

The Monroe offers features previously available only from the highest priced custom builders. Henry Fischer Presidential Collection. . . "You'll feel good inside."

Henry Fischer Builder, Inc.
1035 Eaton Drive • Covington, Kentucky 41017 • (606) 341-4709



The Commonwealth



Vicar Homes is proud to present The Commonwealth, a classic home designed for comfortable family living. Quality is of the utmost importance in every Vicar home, and this one is no exception. Vicar Homes, a former Clermont Home Show Award winner, is committed to superior design, craftsmanship and customer service.

The four bedroom Commonwealth has approximately 2900 square feet . . . and when including the finished lower level, it totals 3600 square feet of living space. The half bath in the finished lower level walkout brings the total to two full and two half baths. For outdoor enjoyment The Commonwealth living space extends into nature with a deck off the breakfast room/family room area and a patio at the lower level.

The Commonwealth's beautifully appointed kitchen will delight every gourmet cook. The feeling of light and openness in the kitchen and breakfast room is enhanced by the white-stained maple custom cabinets, cooking island and the bay window. Highlights of the formal dining room

include another bay window, a coffered ceiling and crown moldings. The Commonwealth's family room boasts 12' ceilings and built-in bookcases along the massive fireplace. Additional built-ins are located in the comfortable first floor paneled study. The spacious master suite is more of a retreat than a bedroom and includes enough space for a sitting room. The luxurious bath, highlighted with beautiful brass fixtures, features the waterfall of Jacuzzi's "Fiore" corner whirlpool bath and a separate shower/steam bath.

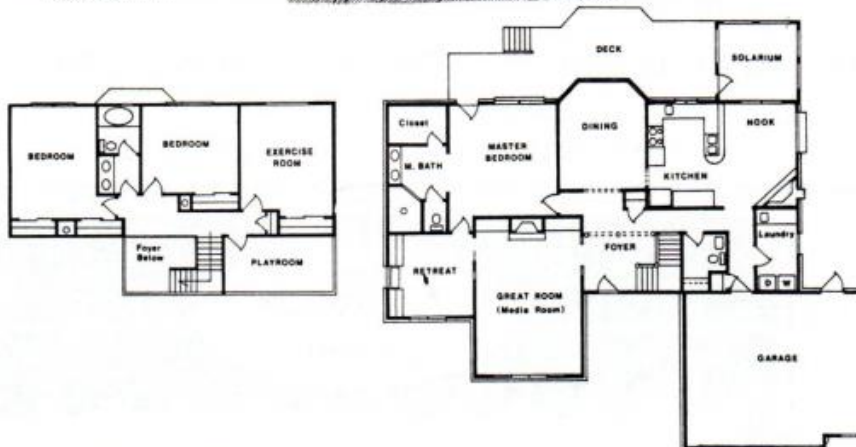
Vicar quality truly shines in the details - the warmth and elegance of the stone and wood exterior, the marble foyer, the hardwood floors in the kitchen and breakfast room, crown moldings, the walkout lower level and a first floor laundry. The Commonwealth offers all the amenities which today's buyers have come to expect . . . a high efficiency furnace, double-glazed wood windows, a state-of-the-art security system . . . and a special feature for the music aficionado - Sonance stereo speakers and controls in four rooms.

Vicar Homes, Inc.

8534 East Kemper Road • Cincinnati, Ohio 45249 • (513) 489-0658



The Melrose



Bramble Homes, Inc. have designed their 1991 Home Show entry to be a haven from the fast-paced lifestyle of the new generation of discriminating home buyer demands.

As you approach The Melrose, notice how the structure appears to grow out of it's already beautiful natural environment. Outdoor living has been carefully designed to achieve all of the benefits of the lovely Belle Meade Farms Lake. Once inside you will not be disappointed as you will be captivated by the detail of the extensive moldings as well as their craftsmanship. Old world tradition of quality in woodcraft could only be surpassed by the numerous "state of the art" amenities build right into the walls.

As you continue through The Melrose, notice the complete utilization of space, The Melrose boast 2820 square feet of living space. Massive oversized hallways and gracious closet space have been designed in each bedroom.

The upstairs bedrooms are serviced by a whole house intercom and a large bath complete with it's own luxurious whirlpool.

Downstairs the first floor master bedroom has its own solid oak retreat room just off the vaulted great room. The master bath shows off it's unique roman tub with the ultimate shower.

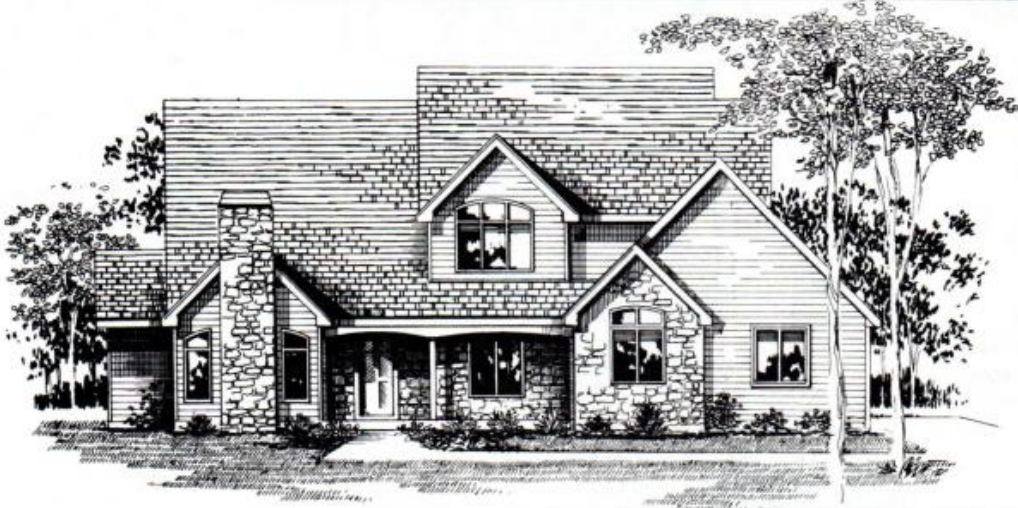
The kitchen hosts the finest in appliances as well as a salad sink at the eat in island, where one can relax with a snack and enjoy the built-in entertainment center and the natural gas fireplace.

As you leave the elegance of The Melrose, be sure to talk with us and discover how Bramble Homes can capture the elegance of your dream home and make your dream come true.

Bramble Homes, Inc.
3776 Orchard Lane • Amelia, Ohio 45102 • (513) 752-5004



The Glen Ferris



Walter and Judy Tormohlen proudly present their sixth Clermont Home Show entry. The exterior of The Glen Ferris features beveled cedar siding accented with natural stone. The dramatic foyer sets the mood of the Glen Ferris with beautiful hardwood flooring, soaring seventeen foot ceiling, and L-shaped staircase leading to the balcony.

The foyer opens to the gracious formal dining room, and through French doors to a restful library/parlor with gas fireplace, bookcase, and paneled wainscoting. In the friendly family room, you will find a tiled wet bar, bookcases, and a woodburning fireplace centered between floor to ceiling windows, made even more stunning by the eleven foot ceiling.

The gourmet kitchen offers gas downdraft cooktop, built-in refrigerator, wall oven with microwave, and convenient

planning desk. The breakfast area has a fourteen foot ceiling with plant shelf, large windows with transoms, and a lovely lake view. This area is joined by a screened porch which leads to an attractive deck.

The comfortable private master suite with luxurious two-person whirlpool tub, glass enclosed shower, double bowl vanity, and large walk-in closet, completes the first floor of this inviting home.

Upstairs are two spacious bedrooms with walk-in closets, an office, and an exercise room. The hall bath is brightened with a skylight.

Tormohlen Homes has been building custom homes for over thirteen years.

Tormohlen Homes

6319 S. Devonshire • Loveland, Ohio 45140 • (513) 575-3434